

All Saints Episcopal Church

Annual Meeting November 6, 2011



Financial Report

Clark Kelly, Treasurer

What we have, and what we owe....

Time flies....



All Saints Episcopal Church Assets & Liabilities

Operating Fund Checking	18,210
Rector's Discretionary Fund	7
Assistant Rector's Discretionary Fund	1,499
Restricted Funds	
Community Ministries	1,336
Brigham Grant	10,246
Memorial Fund	2,823
Caddell Scholarship	3,923
Wakefield Scholarship	5,150
Choir Fund	6,000
Jayne Chiepalich Fund	11,207
Ducey Estate Fund	4,307
Other Funds	897
Endowment Fund	3,383
Unsecured Loan: BankTrust	(19,796)

Days Expenses Cash on Hand:

8

Where we stand in 2011

<h2>All Saints Episcopal Church Income Statement Highlights</h2>

	Actual	Budget	Good / (Bad)
Revenues			
Pledge Collections	357,110	389,488	(32,378)
Other Contributions	11,936	20,000	(8,064)
All Other			18,839
		Subtotal	(21,603)
Expenses			
Diocesan Contribution	13,000	22,500	9,500
All Other			(4,049)
		Subtotal	<u>5,451</u>
		Total	<u>(16,152)</u>

“Where does it say we stand?”



About 10 days behind

2011 Budget = 2012 Draft Budget

**What we collect,
and how we
spend it.....**

What if we filled it
like this every
Sunday?!!

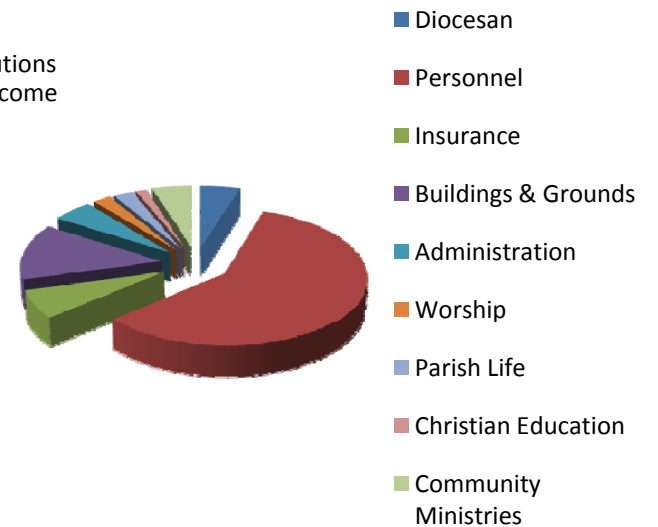
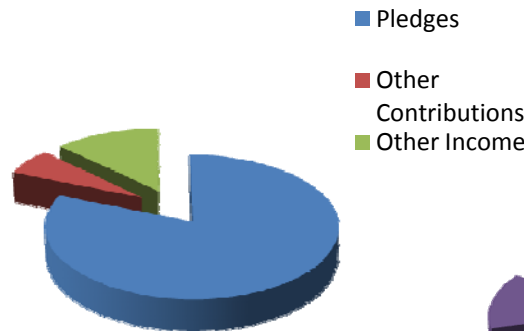


Revenues

		pledges so far
		2012
Contributions		
Pledges	467,365	321,583
Other Contributions	35,535	
	502,900	
Other Income	73,275	
Total Revenue	576,175*	
*Surplus (if all pledges are collected.....)	25,085	

Expenses

Diocesan	27,000
Personnel	325,000
Insurance	37,660
Buildings & Grounds	73,100
Administration	28,400
Worship	12,380
Parish Life	13,500
Christian Education	7,450
Community Ministries	26,600
	551,090*



**Where it came
from, and:
Where will it
come from?!**

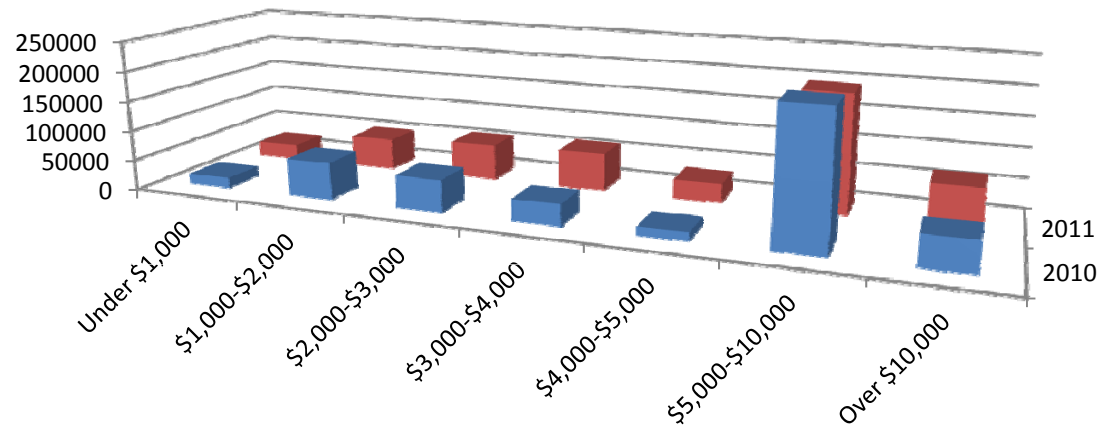
All Saints Episcopal Church Pledge Comparison: 2010-2012

So Far.....

	<u>2010</u>	<u>2011</u>	<u>2012</u>
Under \$1,000	33	51	18
\$1,000-\$2,000	41	35	19
\$2,000-\$3,000	21	24	19
\$3,000-\$4,000	10	18	12
\$4,000-\$5,000	3	7	5
\$5,000-\$10,000	29	26	16
Over \$10,000	4	6	6



		<u>change</u>	
Total # Pledges	141	167 18.4%	95
Total Pledges	444,237	467,385 5.2%	321,583
	(collected 408,463)		



So, here's where
we are:



Pledges

2011

167

467,385

2012

95

321,583

And Now:

Your
Stewardship
Chairman,

Woody
Hannum

